

Eighth Annual

**INNOVATIVE
ARCHITECTURE
&
DESIGN
AWARDS**

Beauty and the Best

Welcome to our Eighth Annual Innovative Architecture & Design Awards. In these pages, we take a look inside—and outside—some of the most impressive new and renovated recreation, sports and fitness facilities from across the continent.

Every year we aim to recognize outstanding facility design, and once again this year's contestants raised the bar another notch for future facilities. Our winners this year set an example for others to follow, and provide innovative and creative solutions to design problems.

All of the entries were carefully considered and ranked by our panel of judges, whose goal was to judge each facility on its own merit, and submit their scores, along with their thoughts on what made their top choices so outstanding.

While it's always a difficult task to narrow the list down to the top facilities, we have selected eight winners, as well as one facility deserving of our Editor's Choice award.

Here on these pages, you'll find photos and descriptions of these standout facilities, as well as highlighted facilities that didn't quite make the cut.

All of these recreation, sports and fitness facilities make for entertaining and informative reading, and we hope you'll take away some creative ideas to use at your own facility.

And if you're building new or renovating, we invite you to submit your facility for consideration next year, when we'll once again consider the latest innovations in design. **RM**

WINNERS

Hats Off to the Following Winners!

(appearing in no particular order):

STUDENT RECREATION CENTER, TEXAS STATE UNIVERSITY – SAN MARCOS

WOOLWICH MEMORIAL CENTRE

THE SALVATION ARMY RAY & JOAN KROC CORPS COMMUNITY CENTER

LAGUNA BEACH COMMUNITY & SUSI-Q SENIOR CENTER

THE STEPHEN L. GREEN STREETSQUASH COMMUNITY CENTER

STUDENT RECREATION CENTER, MONTCLAIR STATE UNIVERSITY

BEIMDIEK RECREATION CENTER, MISSOURI SOUTHERN STATE UNIVERSITY

WILDCAT RECREATION CENTER, CALIFORNIA STATE UNIVERSITY, CHICO

And to Our Editor's Choice Award-Winner:

BLUE WATER YMCA

HIGHLIGHTS

We also are pleased to showcase the following facilities that were submitted and sponsored by the firm that entered them:

BLUE ASH RECREATION CENTER

SPOELHOF FIELDHOUSE COMPLEX, CALVIN COLLEGE

CYPRESS COVE FAMILY AQUATIC PARK

BISHOP JAMES A. GRIFFIN STUDENT CENTER, OHIO DOMINICAN UNIVERSITY

RICHARD JEFFERSON GYMNASIUM, UNIVERSITY OF ARIZONA

STUDENT RECREATION CENTER, CALIFORNIA STATE UNIVERSITY, BAKERSFIELD

WYTHEVILLE RECREATION CENTER

VIC JOHNSTON ARENA

TEXAS TECH STUDENT LEISURE POOL

INSIDE VIEW

To help our entrants provide a complete picture for our panel of judges, we asked them to contribute a narrative describing their innovative projects. Here are the questions we asked to help guide their description as they illustrated the best features of their facilities:

WHAT IS THE FACILITY'S RECREATIONAL VALUE? How is this facility serving its *intended patron's needs*?

WHAT IS THE PROJECT VALUE? (value versus cost, in terms of "bang for the buck") Any creative financing or grants?

WHAT'S INNOVATIVE ABOUT THE PROJECT? In what ways is it unique and creative in its design?

HOW IS ITS AESTHETIC PRESENTATION? Does it create visual excitement and comfort, inside and out?

WHAT IS THE DESIGN CONCEPT FOR THIS PROJECT? How well does it meet functional and operational expectations?

ARE THERE ANY SPECIAL CONSIDERATIONS FOR THE JUDGES TO CONSIDER?

PROFILES COMPILED AND WRITTEN BY: DEBORAH L. VENCE AND EMILY TIPPING

Supplier Directory

To help contribute to their innovative designs, architects and designers turn to top suppliers to finish out facilities, outfit fitness centers and provide a complete, state-of-the-art experience for their patrons. Many of these industry leaders are represented in the advertising pages within this magazine. Here is a list of the advertisers, along with the projects—winners as well as highlighted facilities—they supported with their products and services.

Connor Sport Court International	23
Student Recreation Center, Texas State University - San Marcos	22
Wytheville Recreation Center	39
Daktronics	49
The Salvation Army Ray & Joan Kroc Corps Community Center	28
Student Rec Center at California State University, Bakersfield	45
Wildcat Recreation Center, California State University, Chico	32
List Industries	39
Wytheville Recreation Center	39

Paragon Aquatics	33
Calvin College, Spoelhof Fieldhouse Complex	42
Cypress Cove Family Aquatic Park	43
Playworld Systems, Inc.	31
Blue Water YMCA	38
RDG Planning & Design	21
Beimdiek Recreation Center, Missouri Southern State University	26
Student Recreation Center, Montclair State University	24
S.R. Smith	12
The Salvation Army Ray & Joan Kroc Corps Community Center	28
Splashtacular	28
Blue Water YMCA	38
The Salvation Army Ray & Joan Kroc Corps Community Center	28
Vortex Aquatic Structures Int'l Inc.	29
The Salvation Army Ray & Joan Kroc Corps Community Center	28
Whitewater West Industries Ltd.	43
Cypress Cove Family Aquatic Park	43
Texas Tech Student Leisure Pool	46

OUR 2010 PANEL OF JUDGES

We'd like to take this opportunity to thank our panel of judges for sharing their time and expertise. Their comments, insight and input are invaluable.



Frank Beans, AIA

Frank Beans has been a partner of The Collaborative Inc. for 19 years, bringing over 30 years of experience to the projects on which he works. He has extensive educational experience, having served as design architect on 55 major projects on 20 campuses. Many of these projects have been recreation- and student-oriented facilities. Frank has been a featured speaker at conferences such as NIRSA, focusing on recreation facility planning and design.



Dennis Berkshire

Dennis Berkshire is senior associate with Aquatic Design Group in Carlsbad, Calif. He has over 25 years of experience in the aquatics industry, with field experience in swimming pool design, construction and operation. He has a strong background in water chemistry and has been involved in the design of automated filtration chemical feed and water chemistry control equipment. As an expert on swimming pool operation, he has worked with several states on swimming pool environmental health codes.



Erik Koccher, AIA, LEED AP

Erik Koccher is design principal/sports & recreation specialist with Hastings & Chivetta Architects. He has vast experience on a variety of higher education facilities including student recreational centers and related student life buildings. As design principal, he oversees and guides the majority of the firm's projects. His design objectives are to plan and design buildings that enhance the quality of student life and contribute value to the contextual environment of the campus.



Dave Larson, AIA

Dave Larson has over 35 years of architectural design experience. As senior vice president with TMP Architecture Inc. of Bloomfield Hills, Mich., he leads the firm's efforts in the planning and design of recreation and sports projects. He is involved with numerous professional associations, including NIRSA and the Michigan Recreation and Parks Association, often as a presenter, juror and exhibitor.



G.W. Justin Platts, ASLA, LEED AP

Justin Platts is a partner, landscape architect and urban design focus market leader with RDG Planning & Design, a nationally recognized, multidisciplinary design firm. As an award-winning designer and project manager, Justin has led a variety of project types, ranging from his focus on urban design to medical, corporate and sports and recreation design. Justin is a LEED Accredited Professional and believes that sustainability is a systemic aspect of all good design.



Susan DiPierro Wallover

As president of Wallover Aquatics International LLC, an independent consulting and development firm, Susan Wallover provides operator and user-operated insight during facility planning and design phases, and provides consultation to assist owners in successfully managing their aquatic facility. She has over 20 years of consulting experience gained from directing Recreation Planning Associates, a division of Wallover Architects Inc. With her long history in the parks and recreation field, Susan has gained an excellent perspective on recreational and aquatic facilities, working with public and private operators.

RDG...
PLANNING • DESIGN

**Parks
Sports
Recreation**

rdgusa.com/parks
rdgusa.com/sports

Write E124 on reader inquiry fax card



Gym or Swim... The Single-Source Daylighting Solution.

Clearspans over 100 feet provide diffuse daylight for glare-free, shadowless courts and pool areas. Our unique, total composite technology is the most highly insulating, maintenance-free, leakproof structural system in the world.

- Aluminum Structural Systems • Thermally Broken • Corrosion-Proof
- Long Life Cycle • Featured in LEED™ Accredited Buildings
- Super-Insulating R-20 Kalwall® Nanogel®

Structures Unlimited, Inc.
Energy Efficient Skylights & Pool Enclosures

www.skylightinfo.com

603-645-6539 (800-225-3895 U.S.)

Write E125 on reader inquiry fax card

Winner

INNOVATIVE ARCHITECTURE & DESIGN AWARDS

SUBMITTED BY

Marmon Mok Architecture
in San Antonio, Texas

SIZE: 98,000-square-foot addition; 98,000-square-foot renovation

PROJECT COST: \$24 million

QUICK TOUR:

- Natatorium
- Indoor leisure pool
- Wet classrooms
- Meeting rooms
- Gymnasiums
- Exercise & fitness
- Weights & cardio
- Climbing/bouldering wall
- Golf simulator
- Boxing room
- Cyber café
- Hard entrance scanners
- Sports club offices
- Intramural offices
- Wellness assessment

WHAT THE JUDGES SAID

"Nice, open interior development. Interior transparency is pleasing."

Dave Larson

"Nice transition from old to new—great presence!"

Susan Wallover

"The colonnade across the existing building does a great job of unifying the exterior architecture."

Frank Beans

"Excellent example of a complex addition and renovation that in the end all looks new."

Erik Kocher

ASSOCIATED FIRMS

Program Consultant: SportsPlan Studio
Aquatics Consultant: Counsilman-Hunsaker
Structural Consultant: Jaster-Quintanilla
MEP Consultant: Blum Consulting Engineers
Landscape Architect: TBG Partners



PHOTOS COURTESY OF MARMON MOK / CHRIS COOPER PHOTOGRAPHY

Student Recreation Center

TEXAS STATE UNIVERSITY—SAN MARCOS

San Marcos, Texas

When the original 98,000-square-foot Student Recreation Center at Texas State University was constructed in 1994, enrollment was at 21,000 students. But since then, student enrollment—and participation in campus recreation—has grown dramatically. A student-led initiative to expand the facility to ease crowding won overwhelming approval, and the \$24 million renovation and expansion, which incorporated the original project's second phase and adopted the new Spanish Colonial style of the campus masterplan, was completed in April 2009.

Now all seven major program areas of Campus Recreation are incorporated into the center's diverse areas, from traditional basketball/volleyball courts, indoor soccer, fitness areas and pools to an innovative climbing wall solution, golf practice area and boxing area.

The design of the new building's entrance is a response to the ways campus circulation has evolved. Students enter the facility beneath a cloudlike ceiling and get an immediate view of the range of activities available to them. Three large

removable murals highlight the lobby. These pictures can be updated on a periodic basis and feature students involved in various outdoor activities offered through the university. The existing building was updated with cosmetic changes, allowing a seamless transition from older space to new.



FOR MORE INFORMATION: www.campusrecreation.txstate.edu/programs/informal/src.html



The building hosts several unique features, including a "Calories to Kilowatts" program, which retrofitted 30 elliptical trainers to convert the energy generated during workouts to electricity. Another technological innovation, biometric scanners, is used at the entrance to allow students to enter without an ID. The pools use ultraviolet lamps to disinfect water and oxidize chloramines, improving air quality.

Students descending to the climbing gym see Native Texas white limestone from nearby Hill Country. And the climbing wall itself features split arches instead of the more common central spire, allowing more climbers and offering a view to the windows and into the bouldering area.

According to Glenn Hanley, director of Campus Recreation, participation has increased 61 percent since the expansion was completed.

"The Student Recreation Center and our expanded recreation offerings have assisted in reaching out to our students and aiding in retention," he said. **RM**



SPORT COURT®

The leader in indoor modular surfaces proudly presents our new Response HG™, an innovation in sports surfacing that will add beauty, safety and better performance to your facility.

Only Sport Court's Response HG features SportGuard™ advanced surface technology with a protective urethane coating. Increase the life and look of your indoor sports surface for years to come.



**SPORT
COURT**

Call 800-421-8112
or visit
www.SportCourt.com

GENUINE SPORT COURT: BEST LOOKING. BEST WEARING.

Winner

INNOVATIVE ARCHITECTURE & DESIGN AWARDS

SUBMITTED BY

RDG Planning & Design
in Des Moines, Iowa

SIZE: 78,000 square feet

PROJECT COST: \$21.92 million

QUICK TOUR:

- 10,000-square-foot fitness space
- Recreational multipurpose court space
- Jogging/walking track
- Two multipurpose activity rooms
- Two racquetball courts
- Indoor six-lane, 25-yard pool
- Juice bar
- Locker rooms
- Administrative offices

WHAT THE JUDGES SAID

"Well planned layout on a challenging site. Like the open feel of the interior."

Dave Larson

"A very thoughtful plan. Nicely appointed entry plaza."

Frank Beans

"Great indoor and outdoor appeal. Transparency between indoors and outdoors with wonderful views."

Susan Wallover

"Exterior architecture within context of the existing campus architecture is excellent. Lobby image is fantastic and departs from most traditional student rec centers. Views to the city are terrific."

Erik Kocher

ASSOCIATED FIRMS

Associate Architect: Cubellis

Aquatics Consultant: Aquatic Design Group

Structural Consultant: Consulting Engineers
Collaborative

MEP Consultant: Clive Samuels & Associates

Civil Consultant: Schoor DePalma

Acoustical Consultant: Abel Consulting



PHOTOS COURTESY OF KUN ZHANG, RDG PLANNING & DESIGN



Student Recreation Center

MONTCLAIR STATE UNIVERSITY

Montclair, New Jersey

With a vastly spacious, wide open ambience, the new 78,000-square-foot Student Recreation Center at Montclair University in Montclair, N.J., has answered the school administration's desire for essential recreational space.

"Students in New Jersey live in the densest population in the country. They don't feel healthy. They should have a place where they can work out, where they can do aerobics. This is not a luxury. This (facility) is critical to a healthy life," Montclair State University President Susan Cole stated in a 2008 nationally televised interview for PBS.

Recognized with a 2009 Excellence in Design Award by the New Jersey Recreation & Park Association, the new Student Recreation Center has answered these needs.

Its entrance is located on the south end of the building, extending out to established pedestrian and vehicular routes. Meanwhile, low-maintenance native plants are used around the building to create green space. The entrance plaza uses simple concrete paving, stone elements and landscaping to es-

tablish a strong processional feel. The entry tower provides a prominent and inviting statement reflecting the mission style character of the campus.

The lobby entrance of the facility classifies its social space, with views to most of the activity areas. Features of the new center include 10,000 square



FOR MORE INFORMATION: www.montclair.edu/campusrec/



feet of fitness space, a multipurpose gym featuring two courts, a three-lane jogging and walking track, two multipurpose activity rooms, two racquetball courts, an indoor six-lane, 25-yard pool, a juice bar, locker rooms with showers, lounge rooms equipped with a TV, Play Station 3 and Wii, and administrative offices. The fitness and cardio area of the center has an imposing view of the Manhattan skyline, while other second-level areas have impressive views of the interior.

Just next to the control desk at the center are the monumental stairs and channel glass light wall. Energy-efficient LED [light-emitting diode] lighting in the wall creates a user-programmable light show that can be changed, depending on the time of day or desired effect.

Montclair State University, a 16,000-student suburban campus located 15 miles west of Manhattan Island, is the second largest and fastest growing university in New Jersey.

"Life is stressful for students, especially in New Jersey—our surveys clearly tell us that—and our students need a place and a staff devoted to helping them make healthy and balanced life choices," President Cole said. **RM**



RISK MANAGEMENT.



PROTECT YOUR PATRONS AND INVESTMENT



Made with Pride in the USA

ETS UV SYSTEMS QUALITY • SERVICE • SUPPORT

ets-uv.com | Info@ets-uv.com | Phone 1.877.885.4628 | Fax 1.920.885.4628

Write E127 on reader inquiry fax card



Winner

INNOVATIVE ARCHITECTURE & DESIGN AWARDS

SUBMITTED BY

RDG Planning & Design
in Des Moines, Iowa

SIZE: Addition: 60,000 square feet;

Renovation: 53,400 square feet

PROJECT COST: \$14 million

QUICK TOUR:

Recreation Center:

- 8,000-square-foot fitness & weights space
- 3-court recreational gymnasium
- Three-lane jogging/walking track
- Two aerobics rooms
- Wellness center/assessment suite
- Locker rooms
- Recreation administration offices
- Conference/instruction room
- Fitness patio

Student Health Center, including exam rooms, procedure room, nurses station and laboratory

Student Union, including retail bookstore, book rental bookstore/processing area, grand ballroom, 150-seat theater, VP student life offices, meeting rooms and Board of Governors boardroom

WHAT THE JUDGES SAID

"Integrates well with the existing architecture of the student center."

Frank Beans

"Very nice renovation and blend of new construction; inviting without being 'institutional' looking."

Susan Wallover

"Nice continuity in matching new materials to older construction."

Dennis Berkshire

ASSOCIATED FIRMS

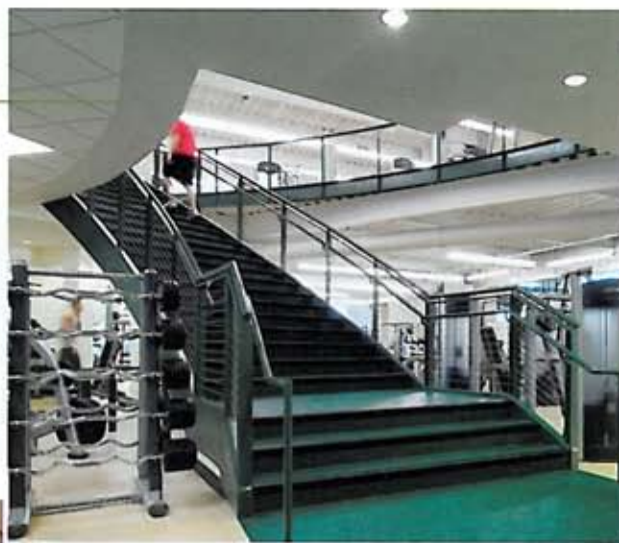
Landscape Architect: RDG Planning & Design

Lighting Designer: RDG Planning & Design

Structural Consultant: Charles Saul Engineering Inc.

MEP Consultant: FSC MEP Engineers LLC

Cost Consultant: Stecker-Harmsen



PHOTOS COURTESY OF KUN ZHANG, RDG PLANNING & DESIGN

Beimdiek Recreation Center

MISSOURI SOUTHERN STATE UNIVERSITY

Joplin, Missouri

Constructed within a strict budget helped along by a \$1 million gift from the late George S. Beimdiek, a leading businessman and insurance professional in Southwest Missouri, the new 60,000-square-foot addition and 53,400-square-foot renovation to the existing Billingsly Student Center at Missouri Southern State University is nothing less than a stunning transformation.

The new facility features the Beimdiek Recreation Center along with a Student Health Center and a Student Union, and acts as a gateway for students to socialize with others and take care of all their health and activity needs on campus.

The recreation center portion of the building features a three-court recreation gymnasium, elevated jogging track, two 4,000-square-foot fitness areas with free weights and cardio and weight machines, two studios for fitness classes, a fitness testing center, locker rooms and a 150-seat theater-auditorium.

Opened in October 2009, the new facility sets the standard for subsequent construction on campus, while fitting in with the existing campus context.

According to Rob Yust, assistant vice president for business affairs at the university, the new recreation center is "...going to be a showcase when they bring potential students to campus. It will be the first stop because it is a very attractive facility."

The addition and renovation bring new life to



FOR MORE INFORMATION: www.mssu.edu/athletics/facilities/reccenter.htm

what was formerly a tired and dated structure. With its striking vertical lines without and undulating curves inside, the facility invites users in, and then offers them views of the activity taking place all along the main street causeway.

The existing student center provided a defined and dominant entrance that was an icon for the campus. This has not changed, though the entrance has been made even more inviting.



Once inside, users can find a diverse array of activities, from a workout in the fitness area to shopping for the latest book requirements in the campus bookstore. And as they circulate through the facility's areas, users can view activities taking place in adjacent spaces. But the view is not limited to the indoors. From the upper-level fitness area, for example, exercisers can look out across a tree-lined vista as they work out.

The wholly renovated and completely expanded Billingsly Student Center has a whole new life. With its many campus programs and student-oriented spaces, it serves multiple masters successfully.

"It is an amazing facility and a real focal point for campus life," said Darren Fullerton, director of student life and dean of students. **RM**



Build Smart. Build Green. With Varco Pruden.



- Recycled Material Content
- Energy Efficient Insulation Alternatives
- Regional Manufacturing Locations
- End-of-Use Recyclability
- Advanced Engineering Solutions
- Cool Paint Finishes

Varco Pruden Buildings Provides Sport Facilities for Public-Owned, Private, Collegiate and Professional.

Developing a new sporting facility? Looking for cost-efficient building solutions?

Varco Pruden provides attractive and affordable structures for gymnasiums, spas and indoor pools, ice hockey and skating arenas, indoor soccer or football practice facilities for college and pro teams.

And, our nationwide network of more than 1,000 independent authorized builders have decades of steel construction experience that you can rely on.

With our value-engineered steel framed building systems, recycled material content and long-life "cool paint" choices, VP Buildings can help you meet sustainable construction and LEED certified project plans as well. Energy-efficient structures can help curb operating costs.

Call 800-238-3246 or go to www.vp.com to find your local Authorized Varco Pruden Builder.



Brigham Young University Football Practice Facility



Cedar Rapids Ice Arena, Iowa



University of Pittsburgh/Steelers Practice Facility



YMCA, Bradenton, Florida

Visit Varco Pruden Buildings online at www.VP.com to find a builder near you!

Varco Pruden Buildings is a division of BlueScope Buildings North America, Inc.

Winner

INNOVATIVE ARCHITECTURE & DESIGN AWARDS

SUBMITTED BY

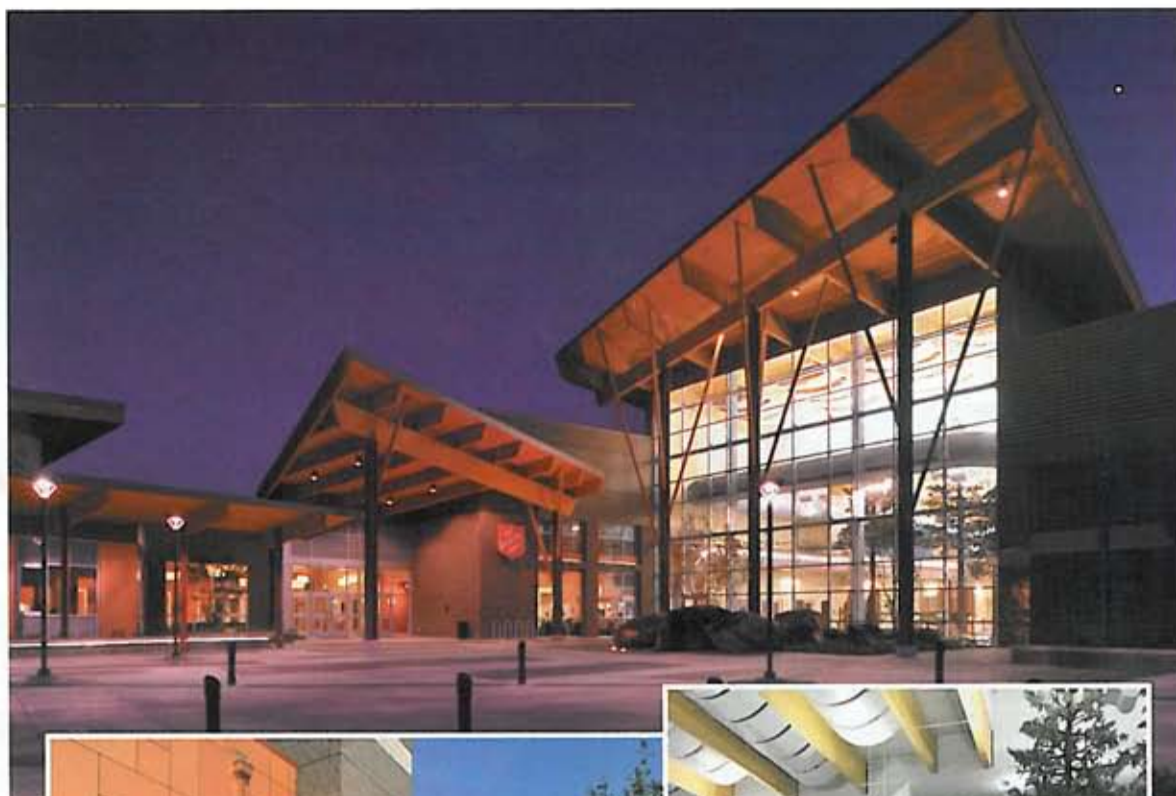
Barker Rinker Seacat Architecture in Denver

SIZE: 91,500 square feet

PROJECT COST: \$33.2 million

QUICK TOUR:

- Aquatics center with 10-lane lap pool and leisure pool with current channel, waterslides, interactive water play features, spas and sprayground
- 300-seat chapel/performing arts venue
- Multipurpose events space
- Two-court gymnasium
- Weight & fitness area
- Fitness/group exercise studio
- Climbing wall
- Party room
- Child care facility
- Indoor playground
- Teen room
- Seniors' lounge
- Locker rooms, including family changing rooms
- Lobby
- Staff offices



PHOTOS COURTESY OF MICHAEL SHOPEN



The Salvation Army Ray & Joan Kroc Corps Community Center

Salem, Oregon

Go to The Salvation Army Ray & Joan Kroc Corps Community Center in Salem, Ore., and you will find a combination of sorts—a church, library, education center, cultural performing arts facility, and recreation and aquatics center—all in one cohesive complex.

The 91,500-square-foot community center, which opened in September 2009, was the result of a generous endowment from the late Joan Kroc, wife of McDonald's founder, Ray Kroc. She donated \$1.8 billion to The Salvation Army in 2004 to build and endow community centers throughout the country. Salem received \$35.5 million from the endowment to build the community center and \$35.5 million to help operate the facility. Local fundraising contributions brought the total project donations to \$81 million.

The facility's six major centers make up the Corps chapel, community and education, recreation, aquatics, building support and administration, which were designed for people of all ages and backgrounds—a place for self-improvement and community connections.

Centrally located within the facility are

innovative
reliable
american made

Delivering top notch customer service and innovative designs on 1000's of projects across the United States and the Caribbean for more than 15 years.



800.844.5334 | www.splashtacular.com

Blue Water YMCA Port Huron, Michigan

The Salvation Army Ray & Joan Kroc Corps Community Center
Salem, Oregon

Write E129 on reader inquiry fax card



WHAT THE JUDGES SAID

"Hats off to the Krocs for their generous vision and to allow projects like this to exist. This is a great destination and a very comfortable and handsome community hub."
Dave Larson

"The theming of this facility is fantastic. The exterior is the best of the bunch, blending gracefully with its surroundings."
Erik Kocher

"The exterior palette of materials in texture and color convey warm and inviting sense."
Frank Beans

"Wonderful building. Nice aquatic area—interesting, inviting but not over-stimulating."
Susan Wallover



ASSOCIATED FIRMS

- Associate Design Architect: CB2 Architects
- Operational Planning: Ballard-King Associates
- General Contractor: LCG Pence
- Civil Engineer: Westech Engineering
- Landscape Architect: Christopher Freshley, Landscape Architect
- Structural Engineer: Miller Consulting Engineers
- Mechanical & Plumbing Engineer: GLUMAC International
- Electrical & Lighting Consultant: Reese Engineering
- Aquatics Consultant: Water Technology Inc.
- Acoustical Consultant: Sparling Acoustical Design
- Kitchen Consultant: Clevenger Associates
- Fitness Consultant: Commercial Fitness Solutions

the community center's entry lobby and lounge, providing convenient access to the recreation and corps/community wings of the center. The lobby area is enclosed by a wood roof structure, with several areas for informal gathering with comfortable seating, tables and a fireplace.

At the heart of the center are the chapel, community and education spaces. The Corps chapel space has sloped floor seating for 300 people and a performance platform, designed to serve the community as a multipurpose worship space and small performance venue. Meanwhile, the community wing includes multipurpose rooms, as well as an events hall serving a variety of functions, including meetings, classes and small receptions, and to supplement the worship spaces. The rooms can be combined and have convenient access to an outdoor community patio. A full commercial kitchen is attached to the events hall as well.

Other facility features include a babysitting room located close to the entrance for drop-in supervision, an early childhood education center, arts and crafts room, library, computer room, game room and adult lounge that anchor the west edge of the community wing, and the recreation activity center that features a gymnasium designed for such sports as volleyball and basketball, featuring an NBA-size court.

Also, the center's fitness area boasts a multipurpose aerobics/dance studio, and a 30-foot climbing wall and belay zone. The fitness area provides circuit training, cardiovascular and free weight equipment, stretching areas and youth fitness. To boot, the aquatics complex features a lighthouse and trees, as well as a 25-yard-by-25-meter pool that supports a variety of training and fitness aquatics activities and competitive swim events, water polo and exercise classes with stairs for easy entry and exit. **RM**

FOR MORE INFORMATION: www.salemkroc.org

ELEVATIONS™
 Keep Dreaming...
 Start Planning!

Inquire about our aquatic playground solutions
Spraypoint™ Poolplay™ Splashpad®

VORTEX
 World Leader in Aquatic Play & Urban Water Landscapes

Vortex International | 1.877.5 VORTEX (toll free USA/CND)
 | Others 514.694.3868
 | Europe 0049 (0) 451.3845.229
www.vortex-intl.com

Write E130 on reader inquiry fax card

Winner

INNOVATIVE ARCHITECTURE & DESIGN AWARDS

SUBMITTED BY

Dattner Architects
in New York, New York

SIZE: 18,000 square feet

PROJECT COST: \$2.9 million

QUICK TOUR:

- 8 international squash courts
- 4 classrooms
- Library
- Locker rooms

WHAT THE JUDGES SAID

"This project really impressed me. It's a small project that is very well done. It is fresh, optimistic and has a wonderful social benefit to the community. It also proves that a project need not be huge to have a huge impact."

Dave Larson

"Very 'clean' looking. Easy environment for study and sports."

Susan Wallover

"Like the sense of transparency from the circulation to the squash courts."

Frank Beans

ASSOCIATED FIRMS

Engineering Consultants: AKF Engineers; LERA Consulting Engineers



Stephen L. Green StreetSquash Community Center

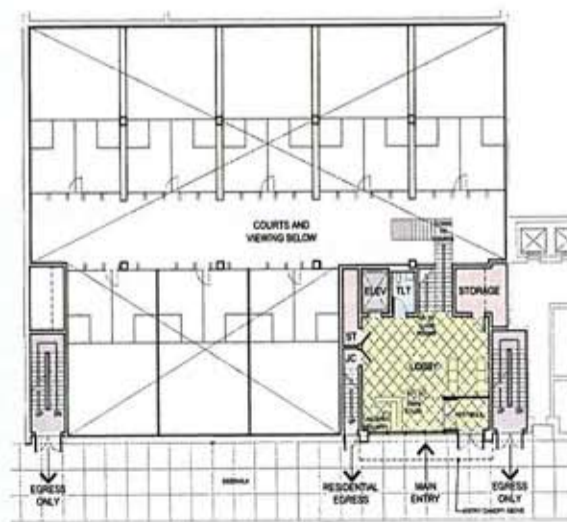
New York, New York

The popular after-school program, StreetSquash, now has a new home—the Stephen L. Green StreetSquash Community Center in New York City's Harlem neighborhood. The spacious, 18,000-square-foot facility, located on 115th Street between Fifth Avenue and Malcolm X Boulevard, is housed in a new residential building built by the development firm, L&M Equities.

With eight international squash courts, four classrooms, a library and locker rooms, the \$2.9 million center opened for business in October 2009, and was named after Stephen L. Green, chairman of SL Green Realty, who is ranked second by U.S. Squash in the 45-50 category. While there are currently 160 StreetSquash participants, the new facility can serve 1,000.

Perhaps one of the most compelling features of the SL Green StreetSquash Community Center is the clever, eye-catching lobby light fixtures that are shaped like giant beehives, as well as the building's

central stairway, which is a prominent glass-and-steel structure that not only serves as the main, architectural focal point in the facility, but as a gathering and viewing space.



FOR MORE INFORMATION: www.streetsquash.org



The double-height daylit lobby has expansive views into the courts and provides a social area for students to wait for pickup. The lobby and courts are visible to passersby and give the popular facility a presence from the street.

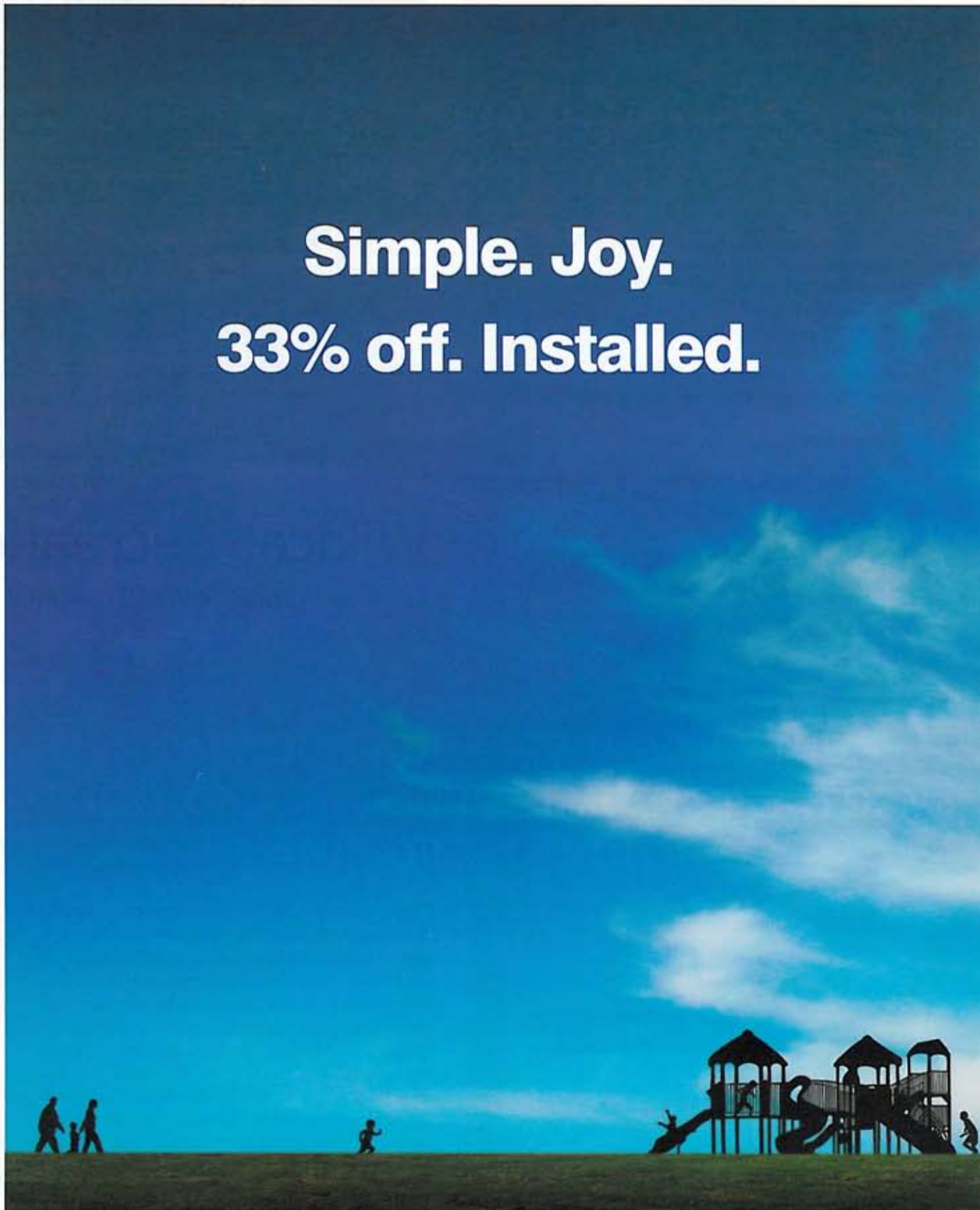
All of the classrooms have access to natural light and are located remotely from the courts to provide a quiet learning environment. High-usage and public spaces were finished with cost-effective but robust and easily maintained materials. Decorative but functional lighting was used where it would have maximum impact, such as the main lobby. Less prominent spaces used more functional fixtures. The facility also features extensive use of glazing to allow easy observation by staff, improve wayfinding and promote a sense of community.

The StreetSquash program—founded in 1999 by George Polsky, a licensed social worker and competitive squash player—combines academic tutoring and college preparation with squash instruction, community service and one-on-one mentoring. Students are required to make a four-day-per-week, year-long commitment to academic excellence and the discipline of sports. To qualify as a StreetSquash graduate, students enter in the sixth grade and must complete seven years in the program. **RM**



Simple. Joy.

33% off. Installed.



14 designs with color options.
To get your 33% off the installed price quote,
find your local representative at
www.TheWorldNeedsPlay.com/save33.

PLAYWORLD SYSTEMS
The world needs play.

Write E131 on reader inquiry fax card

Winner

INNOVATIVE ARCHITECTURE & DESIGN AWARDS

SUBMITTED BY

Sasaki Associates Inc.
in San Francisco

SIZE: 110,000 square feet

PROJECT COST: \$43.7 million

QUICK TOUR:

- Three-court gymnasium
- Multi-activity court
- Indoor three-lane running track
- Two-floor fitness room
- 35-foot climbing wall
- Two 10-foot bouldering walls
- Four multipurpose rooms
- Outdoor 25-meter, eight-lane swimming pool with zero entry
- Outdoor heated spa
- Locker rooms
- Offices and support space

WHAT THE JUDGES SAID

"This is a great piece of architecture regardless of its use. The entire project 'holds together' as one complete design thought and not a series of arbitrary forms."

Dave Larson

"Very nice presence at entry. Interesting forms and materials."

Justin Platts

"Nice visual connection inside and outside. Outdoor heated spa is sure to be a student 'pleaser.'"

Susan Wallover

"Has a transparent quality, not just on the exterior wall but as it displays the variety of activities. Light and airy interiors bring the natural light deeper into the spaces."

Frank Beans

ASSOCIATED FIRMS

General Contractor: John F. Otto Inc.
Structural Engineer: Rutherford & Chekene
MEP & Technology Engineers: Flack + Kurtz
Pool Design: Aquatic Design Group



PHOTOS COURTESY OF TIM GRIFFITH & SASAKI ASSOCIATES

Wildcat Recreation Center

CALIFORNIA STATE UNIVERSITY—CHICO

Chico, California

Finished in August 2009, the new Wildcat Recreation Center (WREC) at California State University, Chico fills a long-held need for recreation space. The Recreation Sports program formerly shared space with both Intercollegiate Athletics and Kinesiology in the Acker Gymnasium, but now students can enjoy approximately 110,000 square feet of activity space, designed to appeal to a broad spectrum of students.

Students enter through a soaring central gallery that visually and physically connects all the major activities in the building and extends the interior to the First Street forecourt and pool court. From this central space, there is a view of the activities and social spaces that enable this facility to serve as the campus 'living room' originally envisioned by students, staff and faculty. Social interaction and leisure factor highly into the atmosphere here, with the setting provided by places of varying size and location. A lounge and refreshment bar extend the gallery's social space, and overlooking the gallery itself, private areas offer room for stretching or to

sit back and read a book.

Materials and colors draw from the campus's built environment and local terrain. The exterior incorporates a custom brick blend that reflects the original masonry administrative buildings. The main circulation flooring is a gray porcelain tile,



FOR MORE INFORMATION: www.aschico.com/wrec



which echoes the rock-strewn river that winds through campus. Wood framing salvaged from the warehouse that formerly sat on the site provides benches and desks.

Horizontal bands of translucent and clear glazing accentuate the experience of running along the 1/8-mile track. Protruding window bays punctuate the exterior face of the building's massing, capturing flashes of action at night and framing views for participants in the day.

The WREC is expected to earn a LEED-NC Silver rating from the U.S. Green Building Council. Its design emphasizes daylighting, water conservation and the use of sustainable materials. The site incorporates bioswales to filter stormwater and drought-tolerant plantings. Building systems incorporate solar thermal panels and high-efficiency boilers to reduce energy use.

But perhaps most impressively, the building provides a home for Recreation Sports programs and staff, and offers a place to gather and get fit for an average of 2,000 users a day. **RM**



PARAGON AQUATICS

Pentair Water



PARAGON AQUATICS UNVEILS THE NEXT GENERATION IN STARTING PLATFORM ANCHOR TECHNOLOGY

The **New** Dual-Wedge Competitor Anchor is a natural addition to our already progressive line of starting platform anchoring systems. This anchor for the two leg starting platform models has been redesigned for greater support and improved operation, eliminating all free movement. The integrated knob design makes installation, removal and adjustment simple with no need for tools. The Dual-Wedge assembly is stored within the anchor when not in use. An included cover prevents debris from entering the anchor.

Paragon Aquatics' mission is to continually raise the bar and set higher standards. Research and development is key to continuous product improvement and innovation. You can depend on Paragon Aquatics for trouble-free performance and longevity.



Thinking toward the future, changing with the times.

Phone: 845.463.7200 • Fax: 845.463.7291 • www.paragonaquatics.com

Write E132 on reader inquiry fax card

Winner

INNOVATIVE ARCHITECTURE & DESIGN AWARDS

SUBMITTED BY

LPA Inc.
in Irvine, California

SIZE: 20,500-square feet

PROJECT COST: \$15.3 million

QUICK TOUR:

Community Center:

- Lobby
- Reception
- Recreation office
- Kitchen
- Dance exercise studios
- Storage
- Conference room
- Art studio

Senior Center:

- Administration
- Storage
- Reception
- Lobby/lounge
- Multipurpose room
- Kitchen
- Computer and game rooms
- Library/lounge
- Multipurpose room with Outreach and Consultation office

WHAT THE JUDGES SAID

"A well crafted, aesthetically pleasing solution. Although the floor plan is basic, it is cost-effective and there are some unique features to the interiors, i.e., the folding doors."

Susan Wallover

"Nice cottage theme carried throughout the building. Nice use of natural daylighting."

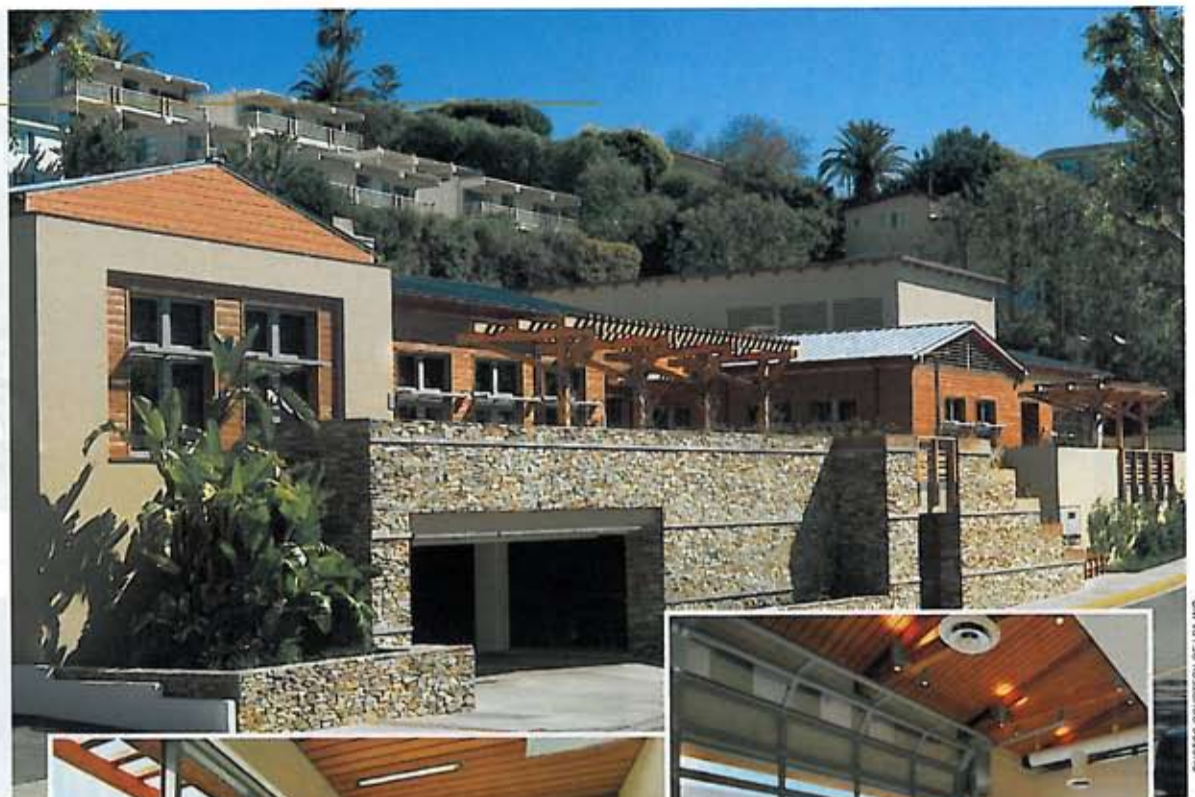
Dennis Berkshire

"The warmth of the building comes from the wood material and detailing on the exterior and interior. Great use of natural light and views. What a connection to the outdoors!"

Frank Beans

"The building works beautifully with the site. Sensitive and creative solution to multiple challenges. The facility feels like it belongs to this community. It evokes a sense of history celebrating the old beach houses that originally existed."

Dave Larson



PHOTOS COURTESY OF LPA INC.

Laguna Beach Community & Susi-Q Senior Center

Laguna Beach, California

The Laguna Beach Community and Susi-Q Senior Center was the product of strong community collaboration and support that resulted in a facility that has become an integral part of the community. The 20,000-square-foot, \$15 million facility is the first public building built in the city in more than 15 years, and is situated between downtown and bordering residential neighborhoods.

A series of public meetings and close interaction with city staff enabled the design team to carefully hone the building's program to meet diverse needs.

"The architect worked hand-in-hand with the residents from the beginning," said Mayor Pro Tem Elizabeth Pearson. "They strived to get to know our community and our values before ever putting pencil to paper. The resulting work exceeded the community's expectations and has led to a doubling of the use of our senior and kids programs and services."

Working within the constraints mandated by the adjacent residential neighborhood, the Community Center needed to include exercise studios, a conference room and an art studio, while the Senior Center needed to include a library, reading area, multipurpose room, kitchen, computer room, game room and wellness center. Working in concert, the community, design team, neighbors and elected officials were able to develop a sustainably designed project that

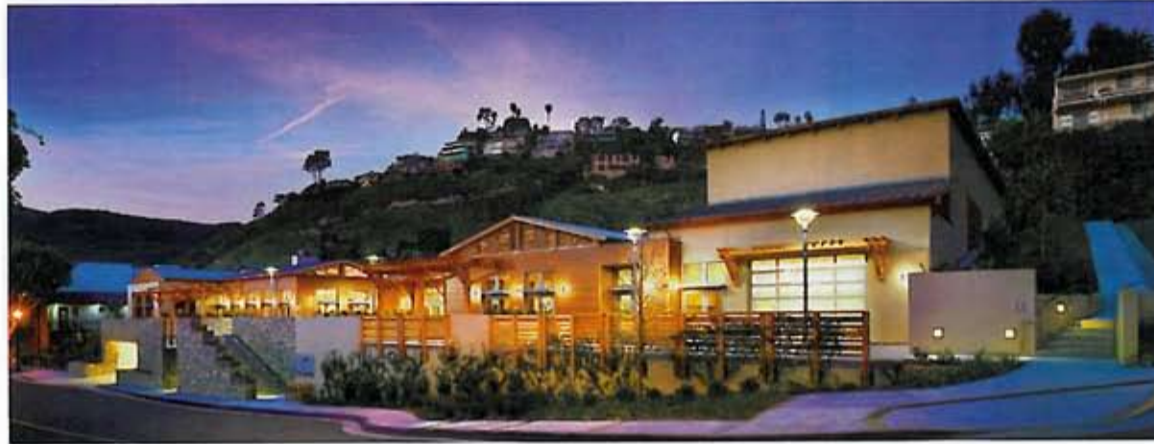
meets the needs of all parties.

The creative and unique design recalls the city's regional features and heritage. The city evolved into an artists' colony in the 1920s and has always had a strong sense of place. Existing historic structures located on the site were photographed and relocated to a city-owned site where they remain available for anyone able to relocate them to a legal building site. These cottages also were the inspiration for the building's design concept.

Despite the programmatic needs for this project, the mass and scale of the building contributed to the village character and reflected the natural beauty of Laguna Beach by using a mixture of materials, including wood, stone, metals and plaster. These materials were selected based on their ability to blend with the adjacent neighborhood and the natural surrounding that incorporated an abundance of vegetation and unique hillsides.

The building's craftsman theme reflects the historic beach cottages of Laguna Beach with varied rooflines, terraces and courtyards. The building's U-shaped formation separates the various functions and provides a unique central courtyard and three other outdoor spaces.

Given the severe fiscal environment municipalities face, special consideration was given to the long-term operations and maintenance of the facility. The city



ASSOCIATED FIRMS

Structural Engineer: Culp & Tanner
 Mechanical/Plumbing Engineer: Tsuchiyama Kaino & Carter
 Electrical Engineer: Konsortium 1
 Civil Engineer: MCE Consultants
 Program Manager: Griffin Structures Inc.
 Landscape Design: Borthwick Guy Bettenhausen Inc.
 Construction Manager: Swinerton Builders



carefully weighed a number of sustainable design strategies and ultimately chose an approach that focused on natural light, natural and low-maintenance materials that include high levels of recycled material when available. The integration of outdoor and indoor spaces embraces the coastal climate by maximizing natural light and ventilations into all spaces.

The new building exceeded the community's expectations and has increased access to programs for children, adults and seniors by providing a centralized location for community members to go for wellness services, friendship, support and recreational activities.

RM

FOR MORE INFORMATION: www.lagunabeachcity.net



Fusion-welded for durability
 E-coated maintenance free finish
 Backed by 20-Year Warranty

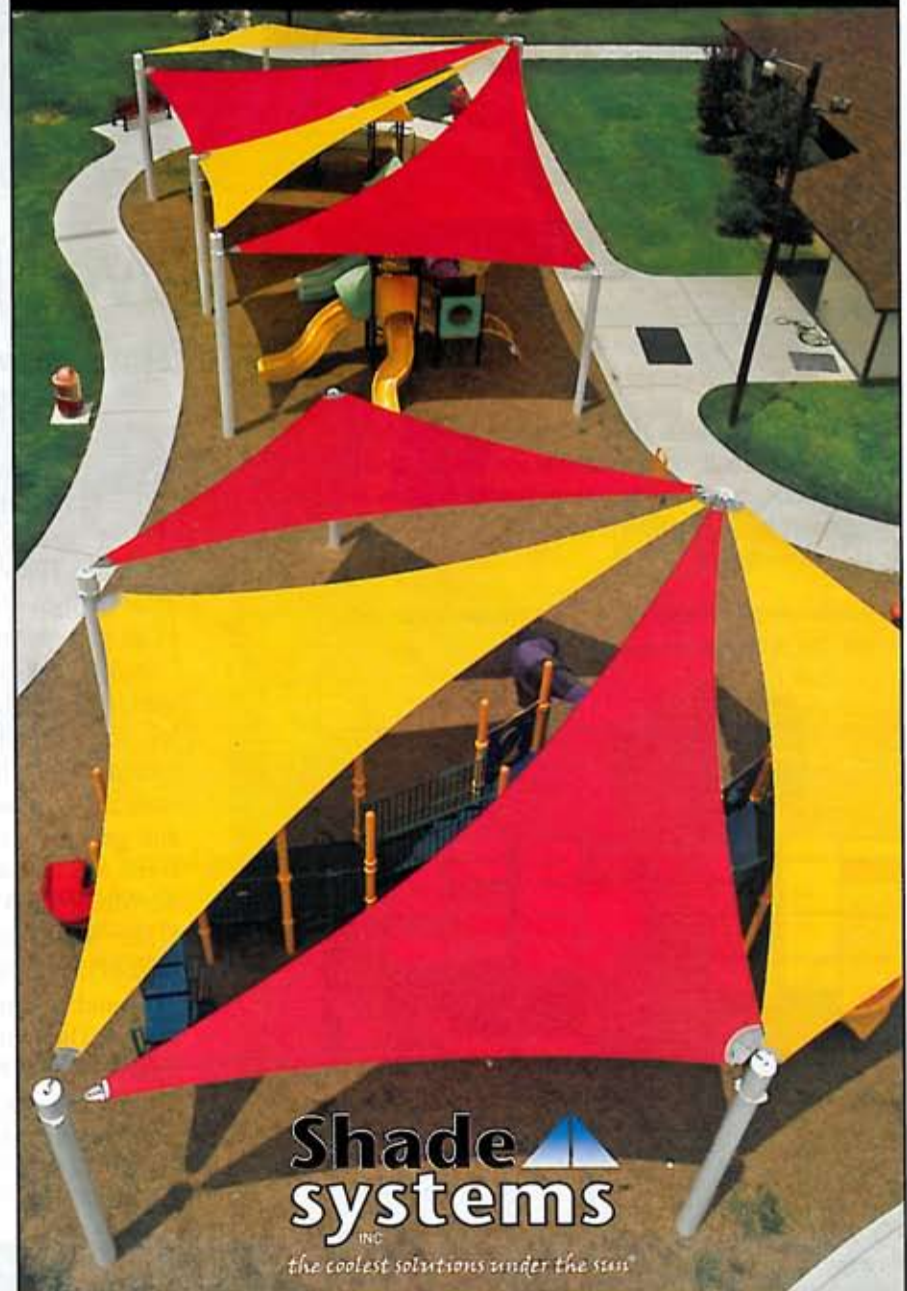


AMERISTAR®

1555 N. Mingo Road Tulsa, OK 74116
 Phone 1-888-333-3422 Fax 1-877-926-3747
 www.montagefence.com Email: mtg@ameristarfence.com

Write E134 on reader inquiry fax card

Trust the Leader in Shade!



Shade systems
 INC

the coolest solutions under the sun®

1-800-609-6066 • www.shadesystemsinc.com

Write E135 on reader inquiry fax card

Winner

INNOVATIVE ARCHITECTURE & DESIGN AWARDS

SUBMITTED BY

MacLennan Jaunkalns Miller
Architects in Toronto

SIZE: 117,500 square feet

PROJECT COST: \$22 million

QUICK TOUR:

- Fitness
- Pool hall, including six-lane, 25-meter pool and leisure basin
- Twin-pad arena facility, including one 1,300-seat spectator arena
- Indoor track
- Multipurpose rooms
- Seniors facility
- Main concourse/viewing area
- Office administration
- Site, including public park, playing fields and track

WHAT THE JUDGES SAID

"Partnerships are growing and certainly can be a prudent use of capital funds. Indoor aesthetics are pleasing."

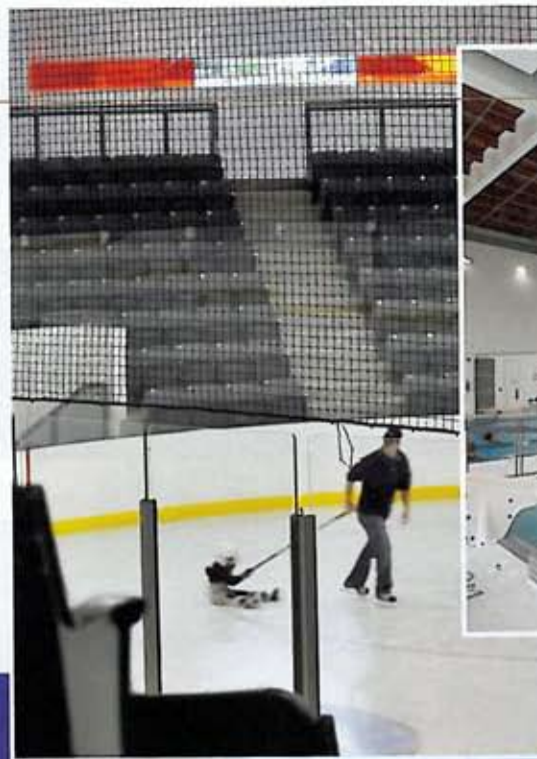
Susan Wallover

"Very functional plan. There is a wonderful sculptural quality to the building, both exterior and interior. Strong visual composition in the interior spaces. A sense of openness from one activity to another."

Frank Beans

"Great use of a simple palette of materials inside and out. Use of color glass is exceptional."

Erik Kocherr



PHOTOS COURTESY OF MACLENNAN JAUNKALNS MILLER ARCHITECTS

Woolwich Memorial Centre

Elmira, Ontario, Canada

Symbolizing strength, resiliency and generosity, the Woolwich Memorial Centre (WMC) in Elmira, Ontario, Canada, is more than just a recreation facility for residents. The WMC is the result of the Woolwich community's intent on celebrating the life of one of its hometown heroes—Dan Snyder.

Snyder was an NHL player killed in a car accident involving his friend and teammate, Dan Heatley, in 2003. The \$22 million recreation facility turned tragedy into inspiration and was made possible in large part through fundraising initiatives and generous donations. The facility's spectator arena was named in Snyder's honor: the Dan Snyder Memorial Arena.

The WMC site is an open green zone directly west of the center of Elmira, overlooking a playing field and running track shared by the local high school. The twin pad arena component has a multipurpose, 1,300-seat arena that is home to the Elmira Sugar Kings Junior B Hockey Club. The area also can double as a convention and entertainment venue.

Located north of the playing field and running track, the aquatics and fitness areas overlook terraces shaded under a large-scale overhanging "verandah" roof. The pool hall houses a six-lane, 25-meter pool and a leisure basin with wide, shallow water steps.



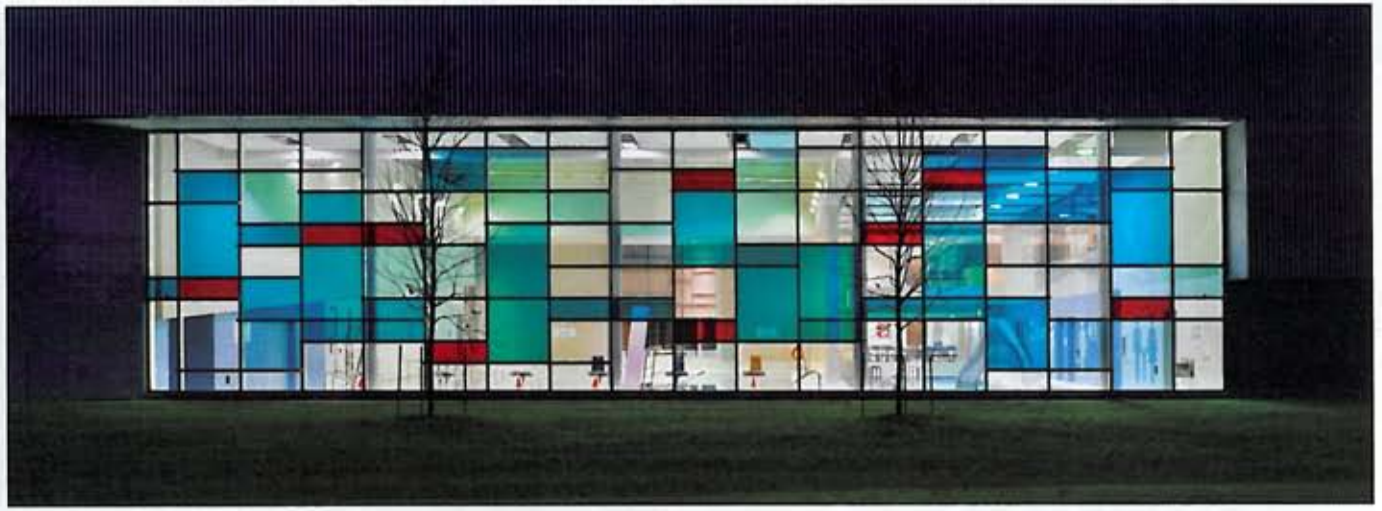
FOR MORE INFORMATION: www.woolwich.ca/en/townshipservices/Woolwich_Memorial_Centre.asp



The fitness component of the facility benefits from views to both the pool hall and the field to the south, and connects to the concourse/running track that forms the circulation system of the main arena. A major multipurpose room and senior facility form the civic corner to the facility.

The 117,500-square-foot recreation facility relied on a simple material palette of corrugated metal, wood, stone and colored glass to define spaces and enhance users' recreational experience. Transparent glazing and a simplified concourse organization provide great sight-line opportunities throughout the complex.

Sustainable design also played a critical role in the project's development. For example, large south-facing windows reduce lighting loads in the pool, while the roof overhang blocks the bright summer sun. The surplus heat from the arena refrigeration system and pool dehumidification systems are shared with other areas of the building through an energy-conserving loop system. **RM**



Revitalize your Pool



Natatec PVC Pool Lining



Uniwall Perimeter Gutter Systems



Uniwall Pool Systems



Uniwall Bulkheads Systems



MicroFlo Filtration Systems

Today's economy means making do with limited budgets and getting the most from existing pool facilities. Natare provides cost-effective renovation and rehabilitation for swimming pools and aquatic facilities around the world. Our experience, knowledge and proven systems deliver a like-new pool for a fraction of the construction cost.

Say goodbye to the pool problems and excessive operating costs of the past. Call Natare today for an upgrade!

- Saves money in water, chemicals and energy costs
- Get a warranty that delivers long-term security and low costs
- Conserve resources while increasing pool safety and enjoyment

Breathe new life into your vintage swimming pool with a facility to meet your specific needs, your budget and your unique space and program requirements.



Winner

INNOVATIVE ARCHITECTURE & DESIGN AWARDS

SUBMITTED BY

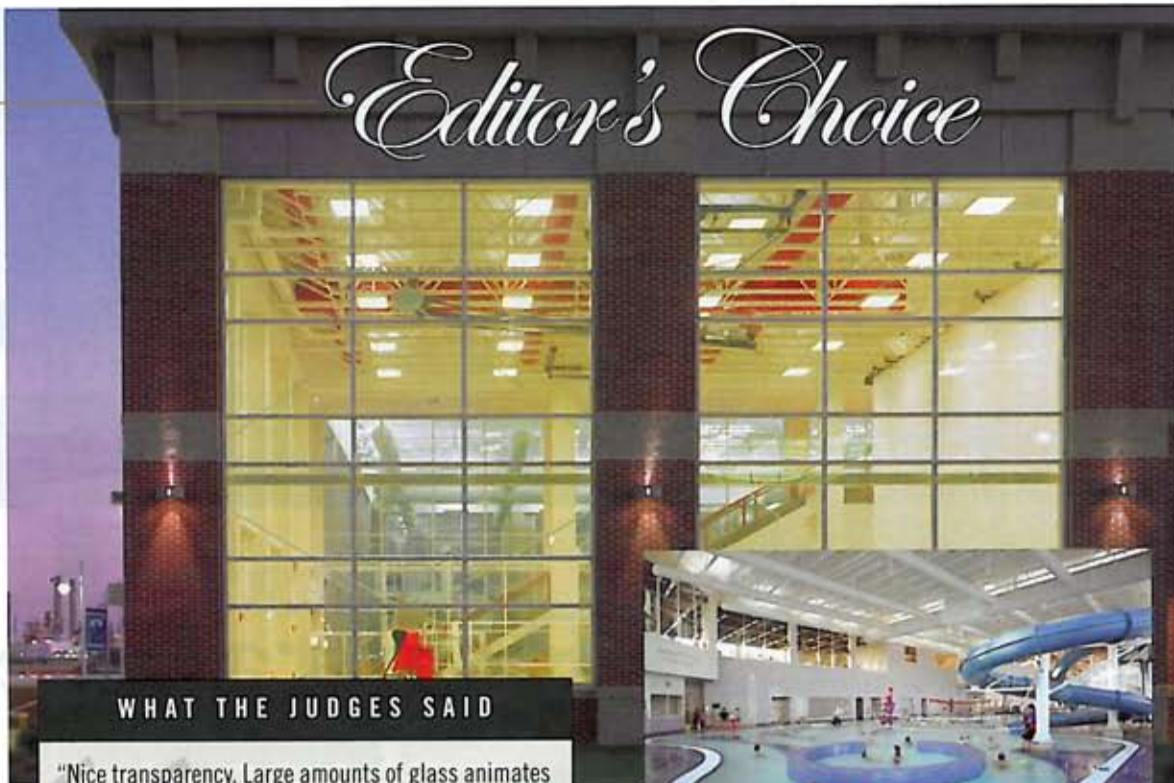
TMP Architecture
in Bloomfield Hills, Michigan

SIZE: 65,295 square feet

PROJECT COST: \$15.39 million

QUICK TOUR:

- 6-lane competition pool
- Recreation pool
- Two slides, lazy river, rotating vortex
- Duffy Wellness Center with cardio and weight training
- Multipurpose rooms
- 1 1/2 court gym
- Group fitness area
- Outdoor play area and equipment
- Child care suite
- Preschool
- Men, Boys, Women, Girls and Family changing areas
- Office space
- Concessions area



WHAT THE JUDGES SAID

"Nice transparency. Large amounts of glass animates the exterior. Nicely connected at different levels."

Erik Kocher

"The exterior elevation reads as this wonderful billboard displaying the 'Y' activities."

Frank Beans

"Visual transparency supports the 'see and be seen' and as such, can provide a comfort level to parents and excitement among friends."

Susan Wallover



ASSOCIATED FIRMS

Mechanical/Electrical Engineer Peter Basso Associates

Civil/Surveyor: T.R. Valentine/Hennessey Engineers

Pool Consultants: Councilman/Hunsaker & Associates

Blue Water YMCA

Port Huron, Michigan

The Blue Water YMCA has a long history of serving the community, providing excellent programs in less-than-desirable facilities for many years. As the infrastructure of their existing building continued to decline, the board of directors began to consider that rather than renovating, a new structure would be a better option, providing improved adjacencies and the proper floor area for critical functions. The new facility provides a state-of-the-art tool to provide even better programming in a warm, spacious environment with great views of the adjacent St. Clair River.

The new Y was primarily financed through pledged donations, a testimony to the value this project holds within the community. The developer of the riverfront area donated the site. The site itself represents a long-term vision to gentrify an unused toxic-laden industrial strip of land along the St. Clair River in Port Huron. Prior to donating the land, the developer underwent an extensive site preparation process, including excavation, pumping and disposal of hazardous waste.

Construction materials were selected for their proven longevity, low maintenance and visual excitement. The result is a timeless aesthetic evoking the architectural vocabulary of the industrial structures that occupied the site long ago. The exterior design with its use of large glass panels, brick piers and stone ascents recalls the old industrial loft imagery of the past, and creates generous views.

The transparency of the design creates an inherently

exciting environment for users. People can see through the building and enjoy views of the river. Other activities occurring throughout the building are also visible, which allows parents and administrative personnel to monitor activities easily and with minimal staff.

The visual access to other spaces creates a comfortable and safe environment. Patrons can stroll through the concourse and observe various activities without physically entering the spaces.

The facility is organized around a central spine with a public entry at each end, with a third entry that provides controlled, secure access to the child care center. Patrons get a dramatic view from the upper lobby into the aquatics center, the gymnasium and the St. Clair River.

Poor soil conditions on the site required the use of deep foundations. The building is constructed on 90-foot-deep concrete piles supporting a concrete floor slab as well as the individual pool tubs. This foundation added cost, but was deemed worth the effort to capture the inherent excitement of the busy river. Visitors are treated to close-up views of ocean freighters from all over the world as they float by at close range.

The tremendous effort taken was a true investment in the Port Huron community, assisting in the transformation of a forgotten piece of land that was a former eyesore and a reminder of faded glory. The new YMCA and indeed the renewal of this area is a prime example of the benefits of community participation, commitment and leadership.

RM



ATRIA/GARDEN PRAIRIE CUSTOM AQUATIC ENCLOSURES

Atria offers a light, airy indoor swimming environment. Atria's opening roof system creates natural air circulation, providing unique customer appeal. Materials and designs minimize maintenance. Aluminum frames have powder-coated colors and custom designs, in freestanding or roof-only applications.

1-800-537-8231



CCSI International, Inc.

Manufacturing and Distribution

www.ccsiusa.com • E-mail ccsi@ccsiusa.com

8642 Hwy. 20 P.O. Box 98 • Garden Prairie, IL 61038

FOR MORE INFORMATION: www.bluewaterymca.com